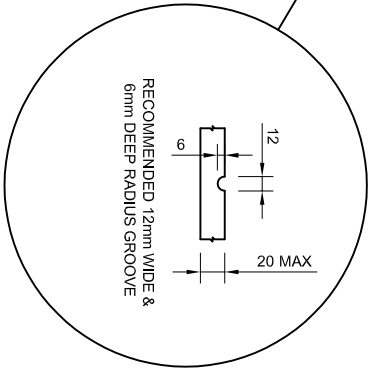
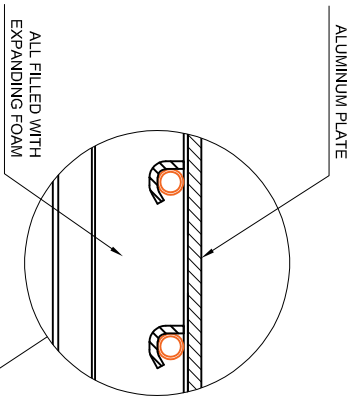
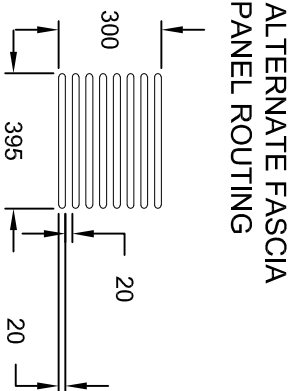
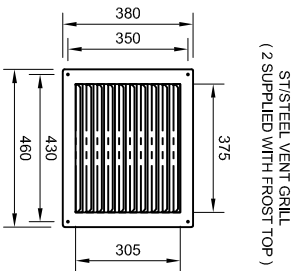
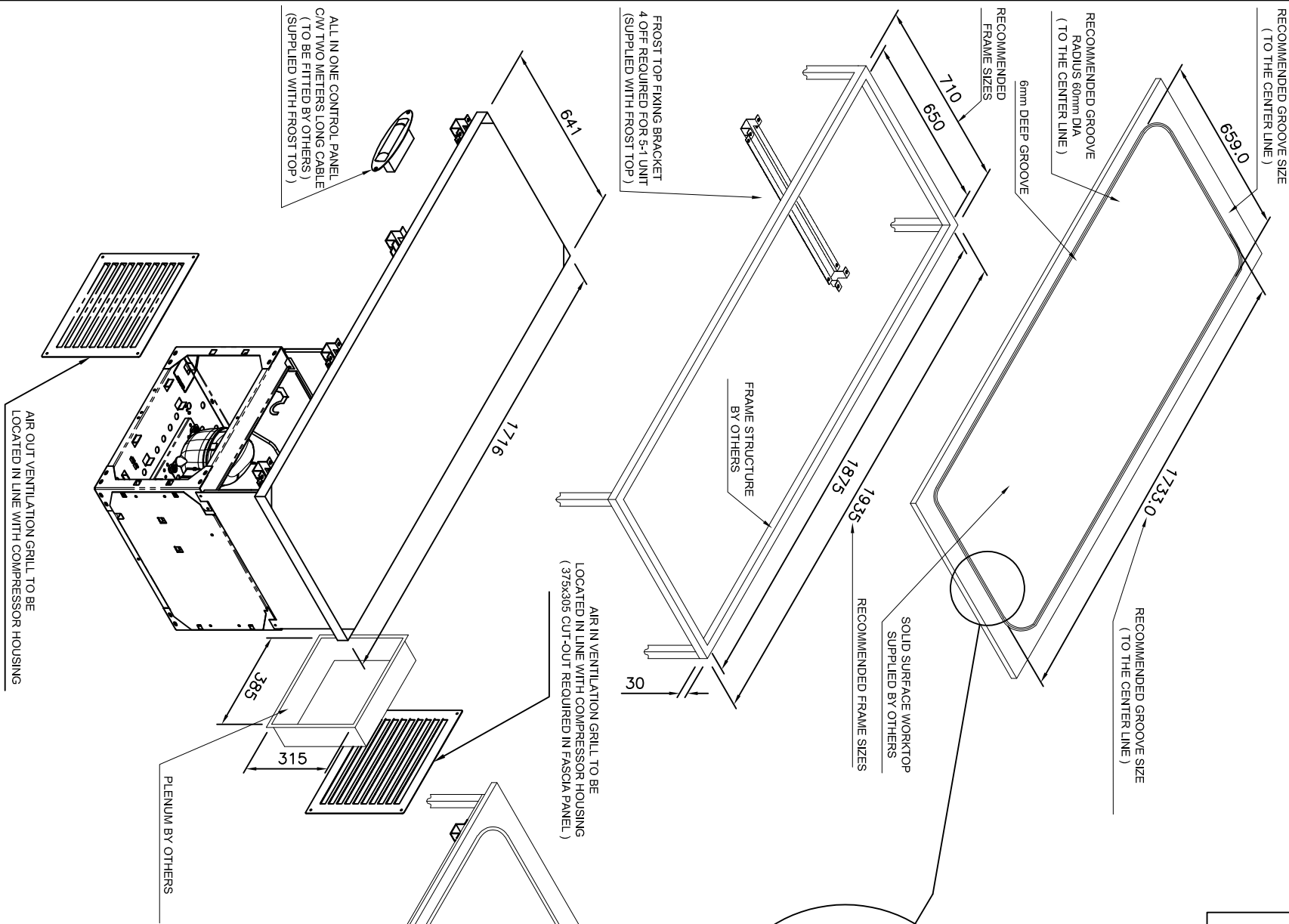


NOTE:-  
THE FROST TOP IS PRE FACTORY SET TO  
ACHIEVE TEMPERATURES BETWEEN -8 TO -10°C  
WHICH IS THE OPTIMUM TEMPERATURE FOR  
PRODUCING FROST ON THE WORKTOP.  
PLEASE CHECK WITH WORKTOP MANUFACTURER  
THAT THE MATERIAL IS ABLE TO PERFORM WITH  
IN THIS TEMPERATURE RANGE.

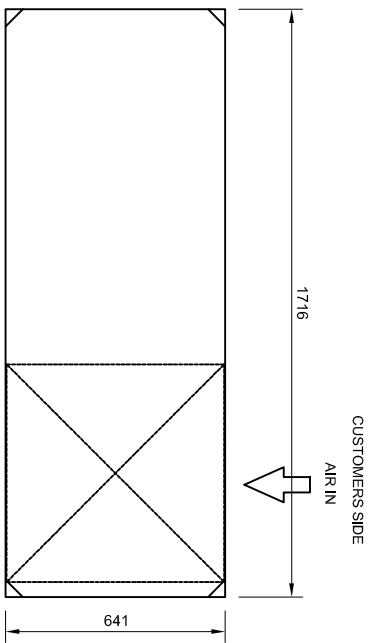
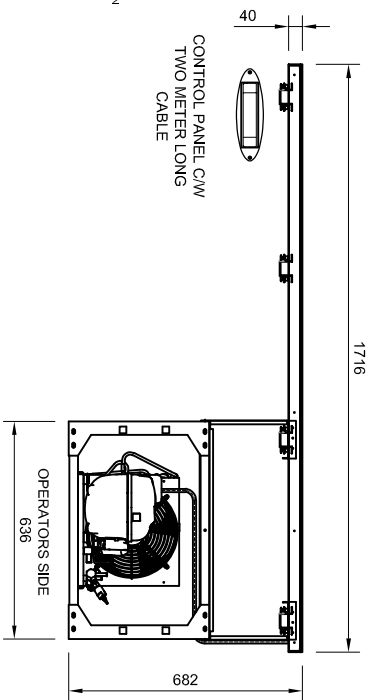
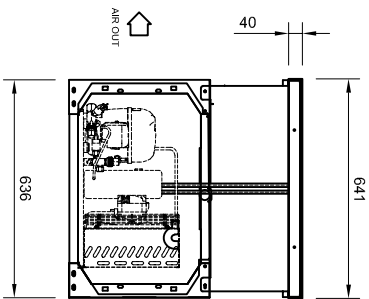
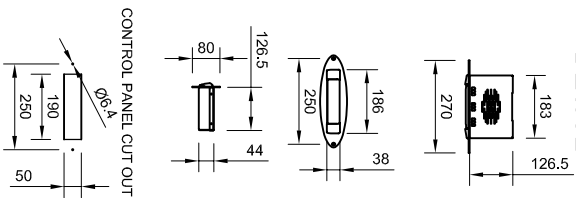
- INSTALLATION NOTES :**
- TEMPERATURE TRANSFER COMPOUND ( SUPPLIED BY -CED ) TO BE APPLIED EVENLY IN BETWEEN SOLID -SURFACE AND FROST TOP.
  - SILICONE NOT TO BE USED !!!
  - ADEQUATE DUCTING REQUIRED FOR CORRECT AIR CIRCULATION ( BY OTHERS ).
  - ELECTRICAL LOAD 3.0kw 13Amp.
  - UNIT SUPPLIED WITH 13A PLUG AND TWO METERS LONG CABLE.
  - GAS CHARGE 0.16 KG ( R290 ).



## Isometric View



### CONTROL PANEL DETAIL



## 5-1 Frost Top

DRAWING STATUS

AWAITING CLIENT APPROVAL

TOLERANCE TABLE		REVISION DETAILS		DATE
1	± 2mm			
1.0	± 0.5mm			
SITE:		VIRGIN LOUNGE		
CLIENT:		CATERING PROJECTS		
DRAWN BY:		IWS		
SCALE:		1:16 @ A2		
DATE:		16/03/2020		
		DRG No:		236466